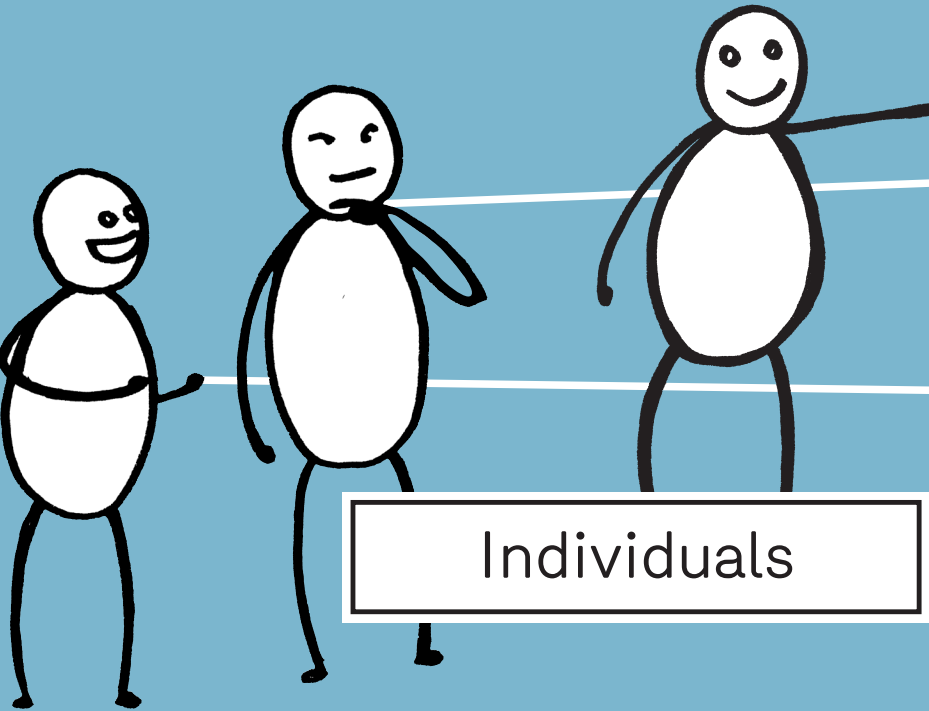


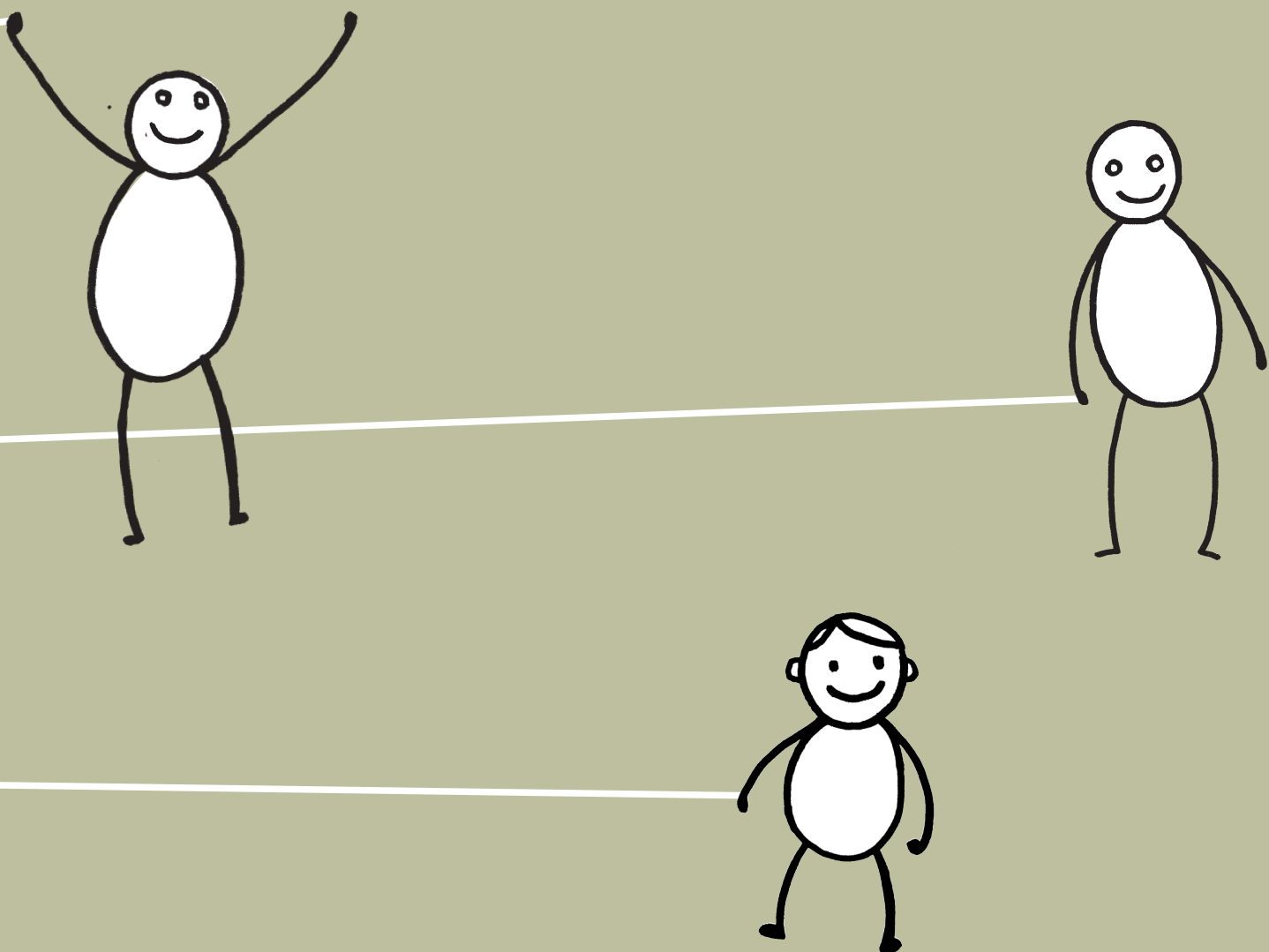
Direct donations ...

- ... are given to individuals and thus reach only very few people
- ... imply a higher risk that they will not be used wisely and sustainably, as the necessary expertise is missing
- + ... get through to those in need in their entirety

Donors



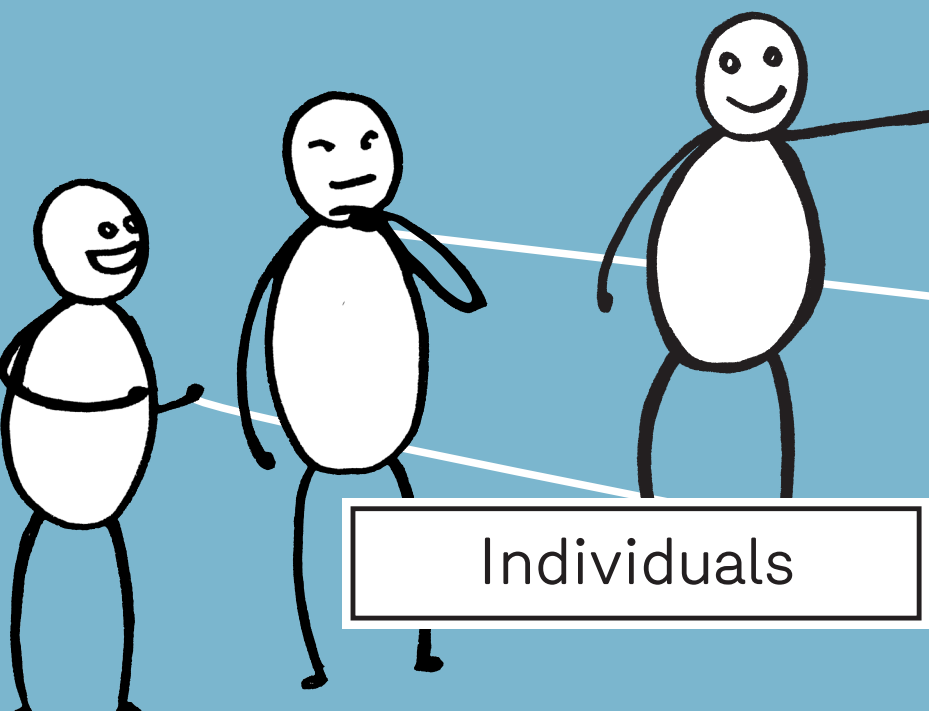
People in need



Donations through intermediary organisations ...

- + ... are used for projects and programmes and thus reach a lot of people
- + ... imply a greater chance of being used wisely and sustainably because they are coordinated by experts
- ... do not get through to those in need in their entirety because costs for administration, fundraising and coordination are deducted

Donors



Organisations in high income countries

- UNICEF
- Red Cross
- Doctors without borders
- State agency for development cooperation

Projects in developing countries

- Programmes for child protection
- Schools
- Conflict Mediation
- Health centres
- Hospitals
- Water supply
- Agricultural Programmes
- Microfinance

People in need

